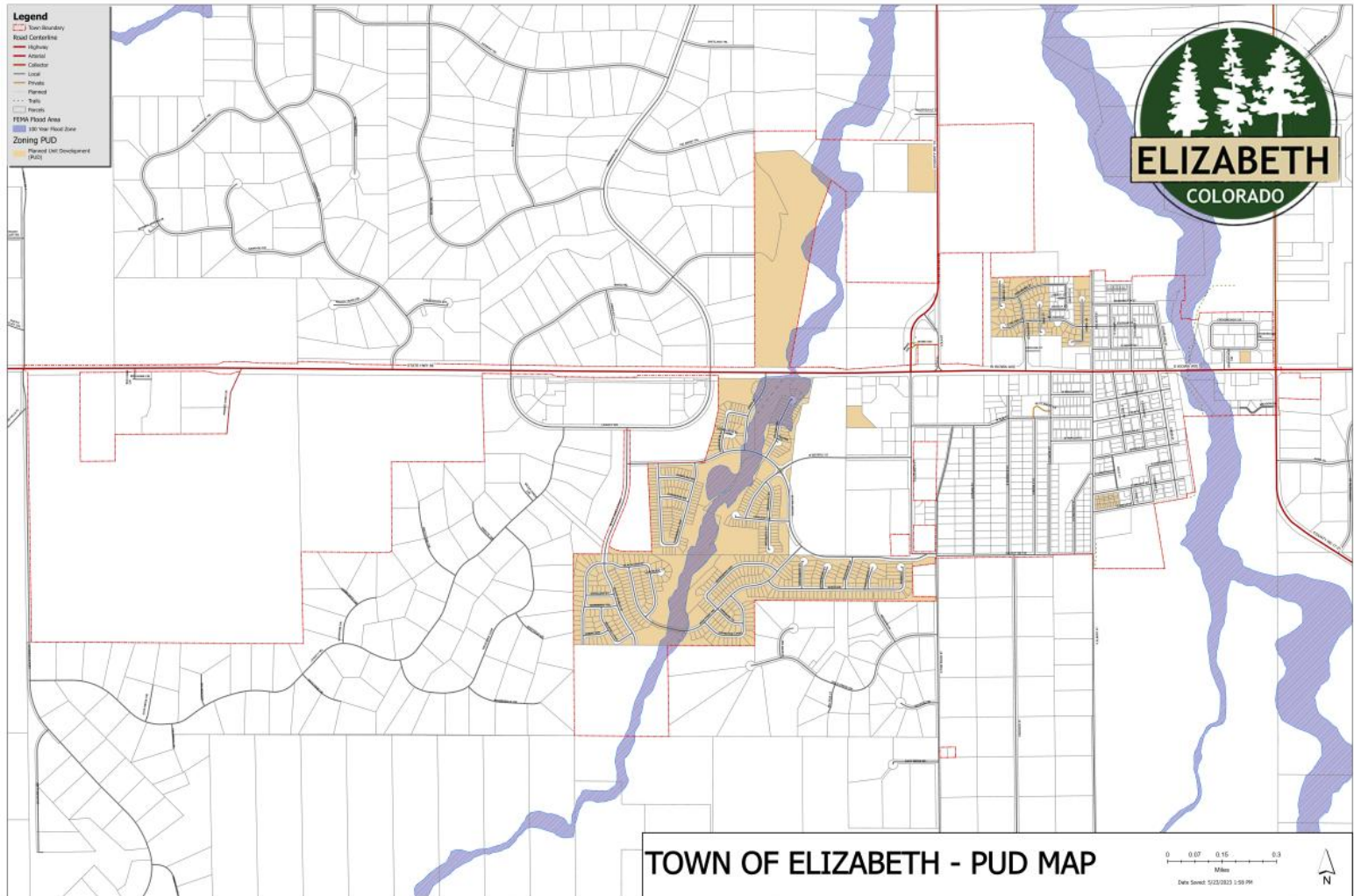


# Planned Unit Developments (PUD)



\*\*Page still under construction\*\*

Properties zoned Planned Unit Development (PUD) have an approved Development Guide and Plan that define the uses allowed within that subdivision. A PUD district may have various uses for residential, business, commercial, industrial, educational, recreational or any combination of the foregoing. The guide and plan shall reflect the variations in lot size, bulk, type of use or activity, density, lot coverage, open space or other regulations modified and approved by the Board of Trustees.

The following subdivisions are zoned PUD:

Elizabeth 86 (Legacy Village)

Elizabeth Town Center F2

Elizabeth Villages

Gold Creek Commons

Gold Creek Park

Hillside Villages

Hollow Woods

Ritoro (Gold Creek Valley)

Walnut Square Apartments

## Supporting Documents

Elizabeth 86 Development Guide (Legacy Village) 16.87 MB
Elizabeth 86 Development Plan (Legacy Village) 7.41 MB
Gold Creek Park Dev Plan and Design Guide (Lot 1) 8.2 MB
Hollow Woods PUD Crossroads Business Park Lot 11 2.75 MB
Ritoro PUD Guide 1st Amendment 1.09 MB
Walnut Square Apartments PUD 1.58 MB